

# Chichester

## Brighton

**LEX**TONS /  
SALES  
LETTINGS  
AUCTIONS  
COMMERCIAL



# Chichester Terrace Brighton

£350,000



3

BEDROOM

1

RECEPTION

2

BATHROOM

## About the property

FOR SALE BY AUCTION 25th February 2026 (Potential To Purchase Pre-Auction)

Set within a striking and elegant stucco-fronted building just moments from Brighton's iconic seafront, this expansive three-bedroom apartment offers nearly 1,200 sq ft of internal living space and boasts its own private courtyard garden — a true rarity in such a prime location.

Positioned in the sought-after Kemp Town area, Chichester House blends timeless Regency architecture with the vibrant spirit of historic Brighton. The apartment itself holds exceptional potential, whether you're seeking a savvy investment opportunity or a rewarding restoration project to return it to its full Regency splendor.

Internally, the property features generously proportioned rooms, high ceilings, and an abundance of natural light throughout providing creative vision to unlock its full character and charm.

Outside, the private courtyard garden is a tranquil, walled sanctuary — perfect for morning coffee or evening relaxation, just steps from the sea. Residents also benefit from access to a larger communal garden at the end of the road, offering a green escape from the lively city atmosphere.

Chichester House is ideally situated for coastal living with city convenience. Brighton Beach is just a stones throw away and the area is well-served by residents permit parking. Shops, cafes, restaurants, and cultural attractions are all within walking distance, while Brighton Station provides direct links to London and Gatwick Airport — making this home as well-suited for commuters as it is for weekend getaways.

A rare opportunity to own a substantial, characterful home in one of Brighton's most desirable neighborhoods. Early viewing is highly recommended.









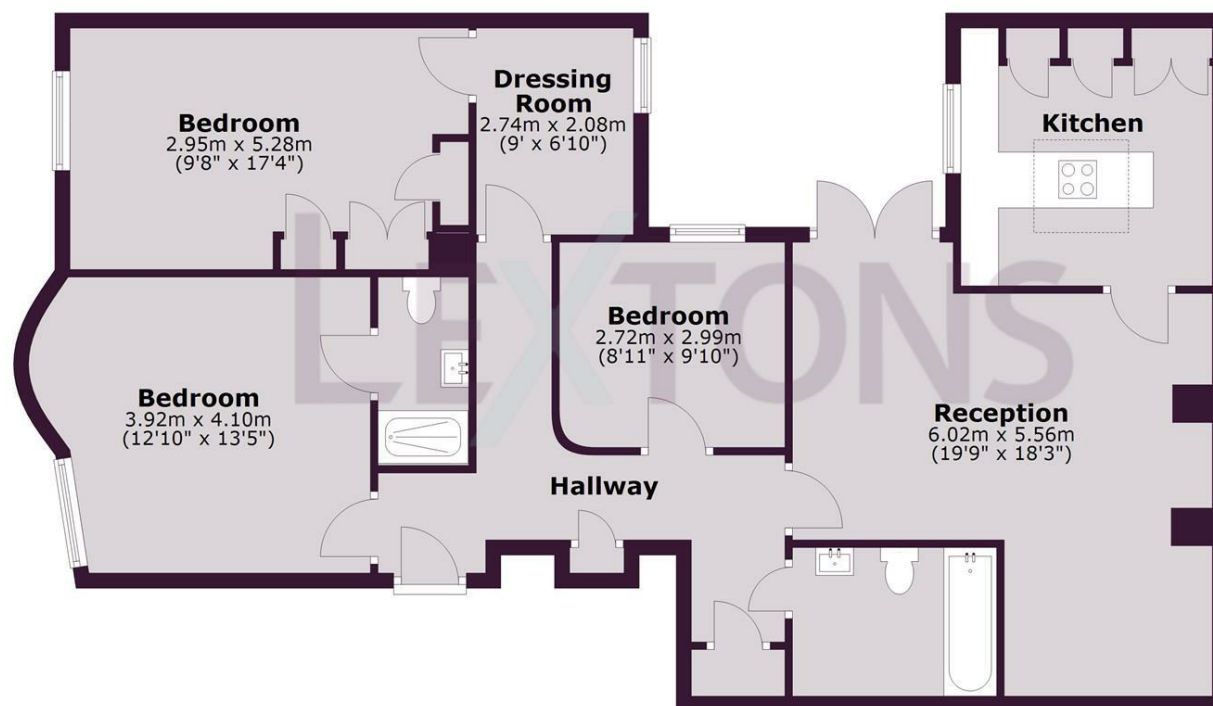




SCAN HERE TO VIEW ALL AUCTION PROPERTIES



Approx. 108.3 sq. metres (1166.2 sq. feet)



Total area: approx. 108.3 sq. metres (1166.2 sq. feet)

Whilst every care has been taken to ensure accuracy, dimensions are approximate and for illustrative purposes only.  
Created for exclusive use for Lextons. All rights reserved.  
Plan produced using PlanUp.

Whilst every care has been taken to ensure accuracy, dimensions are approximate and for illustrative purposes only.

Created by Lextons. All rights reserved.

**LEXTONS**

Call our sales team to arrange  
a viewing appointment:

**01273 56 77 66**

174 Church Road, Hove, BN3 2DJ  
hovesales@lextons.co.uk | www.lextons.co.uk